

Sampling Bottles

- These large volume sample bottles are so related to environmental samples. According to customer's requirements, we provide the corresponding product.
- Large open mouth bottles are designed for storing the soil, sediments and sludge samples.
- Narrow open mouth bottles are suitable for storing liquid samples.
- All the sampling bottles with cap and the inner liner.
- Brown sample bottles are suitable for storing light-sensitive samples.



Straight bottle

Suitable for storing the soil, sediments and sludge samples.

Description	Packaging	Cat. No.
30mL flint glass jar, screw finish 38/R3, 38/R3 mm black screw cap, material phenolic moulding poeder, mounted waxed KKPVDC-liner	48pcs. Per Carton	3.P14801.0300
60mL flint glass jar, screw finish 51/R3, 51/R3 mm black screw cap, material phenolic moulding poeder, mounted waxed KKPVDC-liner	48pcs. Per Carton	3.P14801.0600
120mL flint glass jar, screw finish 58/R3, 58/R3 mm black screw cap, material phenolic moulding poeder, mounted waxed KKPVDC-liner	12pcs. Per Carton	3.P14801.1200

large open mouth bottle

Suitable for storing the soil, sediments and sludge samples.



Description	Packaging	Cat. No.
Weithalsglaeser, Material:Glas Hydrolytische Klasse III, weiB, 30mL, DIN 32, Verschluesse fuer braune und weiBe Weithalsglaeser, schwarz, PP, LKD, DIN32	48pcs. Per Carton	3.P14802.0300
Weithalsglaeser, Material:Glas Hydrolytische Klasse III, braun, 30mL, DIN 32, Verschluesse fuer braune und weiBe Weithalsglaeser, schwarz, PP, LKD, DIN32	48pcs. Per Carton	3.P14802.030A
Weithalsglaeser, Material:Glas Hydrolytische Klasse III, weiB, 50mL, DIN 32, Verschluesse fuer braune und weiBe Weithalsglaeser, schwarz, PP, LKD, DIN32	24pcs. Per Carton	3.P14802.0500
Weithalsglaeser, Material:Glas Hydrolytische Klasse III, braun, 50mL, DIN 32, Verschluesse fuer braune und weiBe Weithalsglaeser, schwarz, PP, LKD, DIN32	48pcs. Per Carton	3.P14802.050A
Weithalsglaeser, Material:Glas Hydrolytische Klasse III, weiB, 125mL, DIN 40, Verschluesse fuer braune und weiBe Weithalsglaeser, schwarz, PP, LKD, DIN40	12pcs. Per Carton	3.P14802.1250



Description	Packaging	Cat. No.
Weithalsglaeser, Material:Glas Hydrolytische Klasse III, braun, 125mL, DIN 40, Verschluesse fuer braune und weiBe Weithalsglaeser, schwarz, PP, LKD, DIN40	12pcs. Per Carton	3.P14802.125A
Weithalsglaeser, Material:Glas Hydrolytische Klasse III, weiB, 250mL, DIN 55, Verschluesse fuer braune und weiBe Weithalsglaeser, schwarz, PP, LKD, DIN55	12pcs. Per Carton	3.P14802.2500
Weithalsglaeser, Material:Glas Hydrolytische Klasse III, braun, 250mL, DIN 55, Verschluesse fuer braune und weiBe Weithalsglaeser, schwarz, PP, LKD, DIN55	12pcs. Per Carton	3.P14802.250A
Weithalsglaeser, Material:Glas Hydrolytische Klasse III, weiB, 500mL, DIN 55, Verschluesse fuer braune und weiBe Weithalsglaeser, schwarz, PP, LKD, DIN55	6pcs. Per Carton	3.P14802.5000
Weithalsglaeser, Material:Glas Hydrolytische Klasse III, braun, 500mL, DIN 55, Verschluesse fuer braune und weiBe Weithalsglaeser, schwarz, PP, LKD, DIN55	6pcs. Per Carton	3.P14802.500A
50mL white wide mouth glass jar, neck DIN 40, DIN 40 black PPN-caps, with white 2 mm PE-foam inlays	24pcs. Per Carton	3.P14803.0500
50mL amber wide mouth glass jar, neck DIN 40, DIN 40 black PPN-caps, with white 2 mm PE-foam inlays	24pcs. Per Carton	3.P14803.050A

Boston bottle



- suitable for storing liquid samples.
- suitable for storing light-sensitive samples.
- With a polypropylene cap and 0.015" PTFE liner.

Description	Packaging	Cat. No.
Boston Flauml;schchen, Material:Glas Hydrolytische Klasse III, braun, 30mL, neck 20-400, mit wei szlig;em Schraubverschluss, 0,010 "PTFE-Inlay, slash;33x78mm	24pcs. Per Carton	3.T12251.030A
Boston bottle, Material:Glas Hydrolytische Klasse III, braun, 60mL, neck 20-400, mit wei szlig;em Schraubverschluss, 0,010 "PTFE-Inlay, slash;39x94mm	24pcs. Per Carton	3.T12251.060A
Boston Flauml;schchen, Material:Glas Hydrolytische Klasse III, braun, 120mL, neck 22-400, mit wei szlig;em Schraubverschluss, 0,010 "PTFE-Inlay, slash;48x133mm	12pcs. Per Carton	3.T12251.120A
Boston Fläschchen, Material:Glas Hydrolytische Klasse III, braun, 240mL, neck 28-400, mit weißem Schraubverschluss, 0,010 "PTFE-Inlay, slash;ø60x138mm	12pcs. Per Carton	3.T12251.240A
Boston Flauml;schchen, Material:Glas Hydrolytische Klasse III, braun, 480mL, neck 28-400, mit wei szlig;em Schraubverschluss, 0,010 "PTFE-Inlay, slash;75x169mm	6pcs. Per Carton	3.T12251.480A

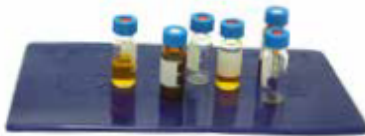
Vials Rack



Description	Packaging	Cat. No.
Vails Rack for 12mm, 2mL vials, made from PP, white.	5 pcs. Per Carton	3.GSCM01.W005

Other colours products are on require.

Glass magnet



- Glass magnet is made from ploy urethane, which have good adsorptivity. So this product can adhere to the table surface and the samples without other assistant,
- This product is skidproof, flame resistant, antibacterial, easy to use, easy to transfer.
- This products solved the problem that sample vials are too small to operate, avoid losing or sloping when hand sampling in chromatogram laboratory.

Description	Packaging	Cat. No.
Glass magnet, blue, 160x90mm	1 pcs. Per PE bag	VHAP-1690-1
Glass magnet, blue, 160x90mm	5 pcs. Per Carton	VHAP-1690

Pipette Tips



- Precision in any detail guarantees highest quality.
- Made of high quality polypropylene
- Firm fit on pipettor cones
- Optimum handling due to straight shape
- Special ionization process guarantees dust free tip production
- Excellent transparency due to optimum surface quality
- Minimum fluid retention due to controlled raw material quality
- Excellent volumetric accuracy due to precisely molded tip orifices
- Most practical tip volumes
- Autoclavable

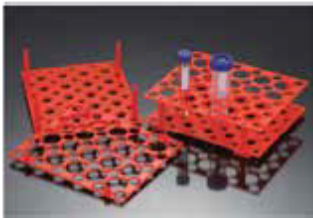
Description	Packaging	Cat. No.
Pipette tips, Nature, 0.5-20ul, Universal design, Ultra Micro Tips	1000pcs. per PE bag	7.250017.01K0
Pipette tips, Nature, 0.5-20ul, Universal design, Ultra Micro Tips	96pcs. per PP box	7.251317.2096
Pipette tips, Nature, 1-200ul, Universal design, Ultra Micro Tips	1000pcs. per PE bag	7.210060.01k0
Pipette tips, Nature, 1-200ul, Universal design, Ultra Micro Tips	96pcs. per PP box	7.211360.2096
Pipette tips, Nature, 1-300ul, Universal design, Ultra Micro Tips	1000pcs. per PE bag	7.230065.01K0
Pipette tips, Nature, 1-300ul, Universal design, Ultra Micro Tips	96pcs. per PP box	7.231365.2096
Pipette tips, Nature, 100-1000ul, Universal design, Ultra Micro Tips	1000pcs. per PE bag	7.210061.01K0
Pipette tips, Blue, 100-1000ul, Design for Brand, Ultra Micro Tips	500pcs. per PE bag	7.210061.11K0
Pipette tips, Blue, 100-1000ul, Universal design, Ultra Micro Tips	96pcs. per PP box	7.210061.2096
Pipette tips, Nature, 1-5mL, Design for Biohit/ Eppendorf/Labmate/Socorex/Witeg	300pcs. per PE bag	7.240065.0300
Pipette tips, Nature, 1-5mL, Design for CappAero/Gilson	250pcs. per PE bag	7.240063.0250
Pipette tips, Nature, 1-5mL, Design for Brand/Finnpipette	500pcs. per PE bag	7.240062.4500
Pipette tips, Nature, 1-5mL, Design for Brand, Ultra Micro Tips	200pcs. per PE bag	7.240062.5200
Pipette tips, Nature, 2-10mL, Design for Finnpipette/Gilson/Socorex	100pcs. per PE bag	7.240064.0100



Centrifuge Tubes

- These centrifuge tubes with conical bottom are available in two sizes of 15mL and 50mL.
- Tubes are made of ultra-clear polypropylene assures the good transparency, chemical resistibility.
- Tubes are provided with printed graduations and a large white writing area for sample identification.
- The flat caps are also available for sample identification.
- Rack-packed tubes are packaged on foam racks.
- Autoclavable at 121 °C, and freezable to -80 °C
- For 15mL centrifuge tubes, there're molded graduation on the top tip with interval 0.10mL

Description	Packaging	Cat. No.
Centrifuge tubes 15mL, conical, 17*120mm, sterile	25 pcs. Per PE bag, 20 bags Per carton	7.330000.6500
Centrifuge tubes 50mL, conical, 30*115mm, sterile	25 pcs. Per PE bag, 20 bags Per carton	7.330000.2500
Centrifuge tubes 50mL, conical, 30*115mm, sterile, with blue caps	25 pcs. Per PE bag, 20 bags Per carton	7.330000B.2500
Centrifuge tubes 15mL, conical, 17*120mm, sterile, with blue caps	25 pcs. Per PE bag, 20 bags Per carton	7.330000B.6500
Centrifuge tubes 50mL, conical, 30*115mm, sterile, with foam rack	25 pcs. Per PE bag, 20 bags Per carton	7.33R000.2500
Centrifuge tubes 15mL, conical, 17*120mm, sterile, with foam rack	50 pcs. Per PE bag, 10 bags Per carton	7.33R000.2500
Free-standing centrifuge tubes 50mL, conical, 30*115mm, sterile	25 pcs. Per PE bag, 20 bags Per carton	7.330000.4500



Tube Racks

Snap-Together Conical Tube Rack Holds both 15mL and 50mL tubes

- Easy-to-assemble polypropylene racks snap together securely
- Designed for stable use in water baths.
- Features alphanumeric grid reference aids for tube identification.
- Shipped flat.
- Wells for 15mL tubes and 50mL tubes

Description	Packaging	Cat. No.
Snap-together conical tube rack, PP, non sterilized	1 pcs. per bag	7.371001.6001



4-Way Micro Tube Rack, Link Together Multipel Racks

- Heavy-duty polypropylene racks feature a unique system of tabs and slots, which facilitate easy connection and sturdy fit.
- Each rack can hold four 50mL conical tube, twelve 15mL conical tubes, thirty-two 1.5mL micro tubes, or thirty-two 0.5mL tubes.
- Autoclavable.
- Assorted pack includes on each of blue, green, rose, yellow, and orange.
- Rack measures 174 x 95 x 52 mm.

Description	Packaging	Cat. No.
4-Way micro tube rack, blue, non sterilized	1 pcs. per bag	7.372001.4001
4-Way micro tube rack, red, non sterilized	1 pcs. per bag	7.372001.2001

Other colours products are on require.



Cyro vials

- Made from special polypropylene for storing biological material or cells at temperature as low as -196°C
- An exclusive silicon washer inside the cap features a positive seal at any temperature
- Thick wall makes vials almost unbreakable
- Large white marking area and graduations in 0.2mL increasements

Description	Packaging	Cat. No.
Cyro vials, external thread with silicon seal, self-standing, 1.2mL	100 pcs. per PE bag	7.511011.2100
Cyro vials, external thread with silicon seal, self-standing, 2mL	100 pcs. per PE bag	7.511012.2100
Cyro vials, external thread with silicon seal, self-standing, 3mL	100 pcs. per PE bag	7.511013.0100
Cyro vials, external thread with silicon seal, self-standing, 4mL	100 pcs. per PE bag	7.511014.0100
Cyro vials, external thread with silicon seal, self-standing, 5mL	100 pcs. per PE bag	7.511015.0100



Storage Box

- Polypropylene box fit for standard freezer racks.
- Store 1.5 to 2.0 mL micro tubes under easy-open, friction-fit lid.
- Locating tubes is easy with molded grid lines and a molded reference point on the lid.
- High wall design.

Description	Packaging	Cat. No.
Compacted microtube storage box, PP,81 positon,natural,non sterilized	1pcs. per bag	7.512001.0001
Compacted microtube storage box, PP,81 positon,blue,non sterilized	1pcs. per bag	7.512001.4001
Compacted microtube storage box, PP,100 positon,natural,non sterilized	1pcs. per bag	7.512011.0001
Compacted microtube storage box, PP,100 positon,blue,non sterilized	1pcs. per bag	7.512011.4001

Other colours products are on require.

Plastic Pasteur pipette



- Plastic Pasteur pipette manufactured from a special non-toxic low-density polyethylene.
- Ideal for transferring and dispensing liquids safely in all types of laboratories, eliminating the risk of cross contamination.
- Offer excellent transparency with uniform wall thickness and precise graduations ensuring consistent results.

Description	Packaging	Cat. No.
3mL plastic Pasteur pipette, 150mm length,non sterilized	500 pcs. per box	7.260011.1500
1mL plastic Pasteur pipette, 150mm length,non sterilized	500 pcs. per box	7.260017.1500

Culture Tube and Test Tube

- Our test tubes and culture tubes are manufactured from tubing that has uniform wall thickness and exacting diameters.
- Rims are fire polished and smooth; tube bottoms are perfectly formed.
- Whether plain top, screw-capped, glass stoppered or flared rim, these test tubes will always perform in your lab.



Test Tube

Description	Packaging	Cat. No.
Test tube, AR glass, 4mL, O.D. 10mm x L 75mm,wall thickness 0.6mm	250pcs. per PP box	3.014010.0000
Test tube, AR glass, 6mL, O.D. 12mm x L 75mm,wall thickness 0.6mm	250pcs. per PP box	3.015012.0000
Test tube, AR glass, 10mL, O.D. 13mm x L 100mm,wall thickness 0.6mm	250pcs. per PP box	3.110013.0000
Test tube, AR glass, 15mL, O.D. 16mm x L 100mm,wall thickness 0.7mm	250pcs. per PP box	3.112016.0000
Test tube, AR glass, 24mL, O.D. 16mm x L 150mm,wall thickness 0.7mm	250pcs. per PP box	3.124016.0000
Test tube, AR glass, 28mL, O.D. 18mm x L 150mm,wall thickness 0.8mm	250pcs. per PP box	3.128018.0000
Test tube, AR glass, 20mL, O.D. 20mm x L 150mm,wall thickness 0.8mm	250pcs. per PP box	3.130020.0000

Culture Tubes



Description	Packaging	Cat. No.
Culture Tubes, Reusable, 13 x 100mm, 8mL	100pcs. Per Carton	3.038013.CT00
Culture Tubes, Reusable, 16 x 100mm, 12mL	100pcs. Per Carton	3.312016.CT00
Culture Tubes, Reusable, 16 x 125mm, 16mL	100pcs. Per Carton	3.316016.CT00
Culture Tubes, Reusable, 16 x 150mm, 20mL	100pcs. Per Carton	3.320016.CT00
Culture Tubes, Reusable, 20 x 125mm, 25mL	100pcs. Per Carton	3.325020.CT00
Culture Tubes, Reusable, 20 x 150mm, 30mL	100pcs. Per Carton	3.330020.CT00
Culture Tubes, Reusable, 25 x 150mm, 50mL	100pcs. Per Carton	3.350025.CT00
Culture Tubes, Reusable, 25 x 200mm, 70mL	100pcs. Per Carton	3.370025.CT00

Screw Cap With PTFE-Faced Rubber-Lined Caps for Culture Tubes

Description	Packaging	Cat. No.
Phenolic Cap with PTFE-Faced Rubber Liner, 13-415	100pcs. Per PE bag	3.005360.CT13
Phenolic Cap with PTFE-Faced Rubber Liner, 15-415	100pcs. Per PE bag	3.005360.CT15
Phenolic Cap with PTFE-Faced Rubber Liner, 18-415	100pcs. Per PE bag	3.005360.CT18
Phenolic Cap with PTFE-Faced Rubber Liner, 24-410	50pcs. Per PE bag	3.005360.CT24